

### DETTAGLI

- Abbottonatura nascosta con automatici
- 3 automatici a vista
- Taschino sul petto
- Taschino portapenne sulla manica
- Inserti in rete
- 2 spacchetti dietro

### COLORE

C01 Bianco

### TESSUTO

50% lyocell  
50% poliestere  
180 g / m<sup>2</sup>



### TAGLIE

S ÷ 5XL

**SLIM FIT**



Le misure indicate si riferiscono alle taglie **S** per i capi femminili, **L** per i capi maschili. Per i capi a taglia unica le misure indicate sono effettive.

Uno dei **Best Seller** Giblor's: amata da ogni categoria di chef, una volta provata diventa insostituibile. Il suo stile senza tempo e i dettagli contemporanei incontrano il favore di un gran numero di professionisti.

### COLORI DISPONIBILI



C01 Bianco

TABELLE TAGLIE  
E CORRISPONDENZE

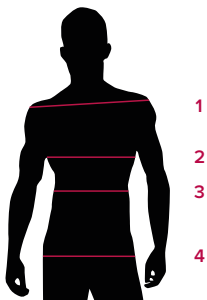
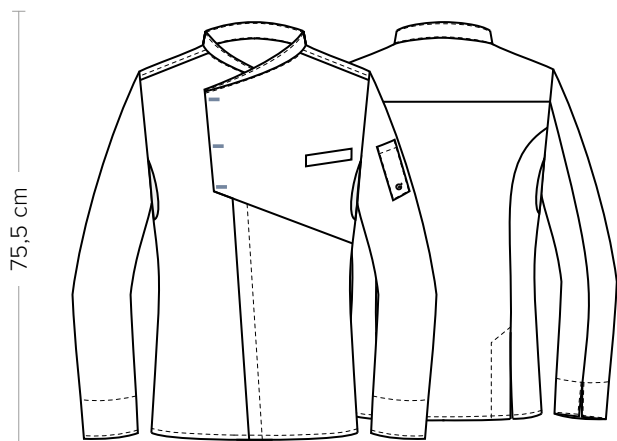


TABELLA ST-G1 SLIM FIT

TAGLIA	XS	S	M	L	XL	XXL	3XL	4XL	5XL
<b>1 - SPALLE</b>	44	45	46	47	49	51	53	55	57
<b>2 - TORACE</b> circonferenza	92-96	96-100	100-104	104-111	111-116	116-124	124-132	132-142	142-152
<b>3 - VITA</b> circonferenza	80-84	84-88	88-92	92-99	99-106	106-116	116-126	126-138	138-148
<b>4 - BACINO</b> circonferenza	92-96	97-101	101-105	105-111	111-117	117-125	125-133	133-143	143-153

**GUIDA ALLE TAGLIE** **1)** Prendere le misure anatomiche (corpo con abbigliamento intimo) senza stringere mantenendo ben teso il metro. **Nota:** nel caso vogliate indossare dei camici già con dell'abbigliamento sotto prendete le misure già abbiagliati. **2)** Nel caso tra le misure prese vi fosse una misura a cavallo fra 2 taglie vi consigliamo di prendere quella più grande. **3)** Le misure della tabella sono espresse in centimetri.



### DETTAGLI

- Abbottonatura nascosta con automatici
- 3 automatici a vista
- Taschino sul petto
- Taschino portapenne sulla manica
- Inserti in rete
- 2 spacchetti dietro

### COLORE

U32 Nero

### TESSUTO

50% lyocell  
50% poliestere  
180 g / m<sup>2</sup>



### TAGLIE

S ÷ 5XL

**SLIM FIT**



Le misure indicate si riferiscono alle taglie **S** per i capi femminili, **L** per i capi maschili. Per i capi a taglia unica le misure indicate sono effettive.

Uno dei **Best Seller Giblor's**: amata da ogni categoria di chef, una volta provata diventa insostituibile. Il suo stile senza tempo e i dettagli contemporanei incontrano il favore di un gran numero di professionisti.

### COLORI DISPONIBILI



U32 Nero

TABELLE TAGLIE  
E CORRISPONDENZE

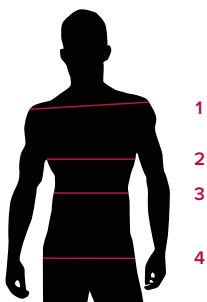


TABELLA ST-G1 SLIM FIT

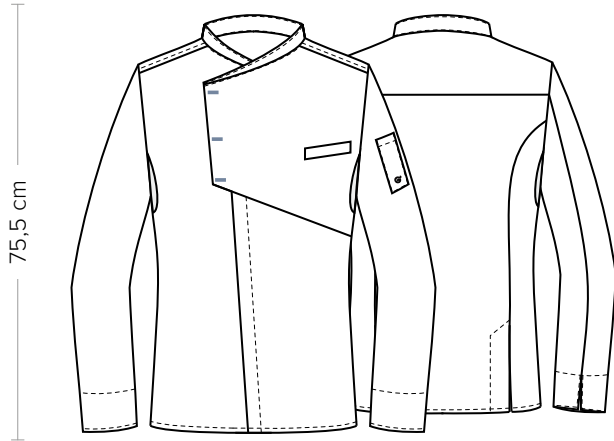
TAGLIA	XS	S	M	L	XL	XXL	3XL	4XL	5XL
<b>1 - SPALLE</b>	44	45	46	47	49	51	53	55	57
<b>2 - TORACE</b> circonferenza	92-96	96-100	100-104	104-111	111-116	116-124	124-132	132-142	142-152
<b>3 - VITA</b> circonferenza	80-84	84-88	88-92	92-99	99-106	106-116	116-126	126-138	138-148
<b>4 - BACINO</b> circonferenza	92-96	97-101	101-105	105-111	111-117	117-125	125-133	133-143	143-153

**GUIDA ALLE TAGLIE** **1)** Prendere le misure anatomiche (corpo con abbigliamento intimo) senza stringere mantenendo ben teso il metro. **Nota:** nel caso vogliate indossare dei camici già con dell'abbigliamento sotto prendete le misure già abbigliati. **2)** Nel caso tra le misure prese vi fosse una misura a cavallo fra 2 taglie vi consigliamo di prendere quella più grande. **3)** Le misure della tabella sono espresse in centimetri.

# EMANUEL

ITEM CODE  
K8G00730

**Giblor's**  
italian work/life specialist



### DETAILS

- Concealed buttoning with press studs
- 3 visible press studs
- Breast pocket
- Pen pocket on sleeve
- Mesh fabric panels
- 2 rear vents

### SIZES

S ÷ 5XL

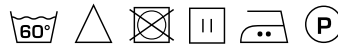
**SLIM FIT**

### COLOURS

C01 White

### FABRIC

50% lyocell  
50% polyester  
180 g / m<sup>2</sup>



The measures indicated refer to sizes **S** for women, **L** for men. For one-size-fits-all garments, the measurements indicated are effective.

One of **Giblor's Best Sellers**: loved by any kind of chef, it becomes irreplaceable once tried. Its timeless style and contemporary details have the approval of a big number of professionals.

### AVAILABLE COLOURS



C01 White

SIZE TABLES  
AND CORRESPONDENCES

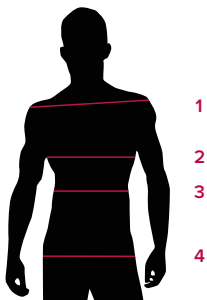


TABLE ST-G1 SLIM FIT									
SIZE	XS	S	M	L	XL	XXL	3XL	4XL	5XL
<b>1 - SHOULDERS</b>	44	45	46	47	49	51	53	55	57
<b>2 - CHEST</b> circumference	92-96	96-100	100-104	104-111	111-116	116-124	124-132	132-142	142-152
<b>3 - WAIST</b> circumference	80-84	84-88	88-92	92-99	99-106	106-116	116-126	126-138	138-148
<b>4 - HIPS</b> circumference	92-96	97-101	101-105	105-111	111-117	117-125	125-133	133-143	143-153

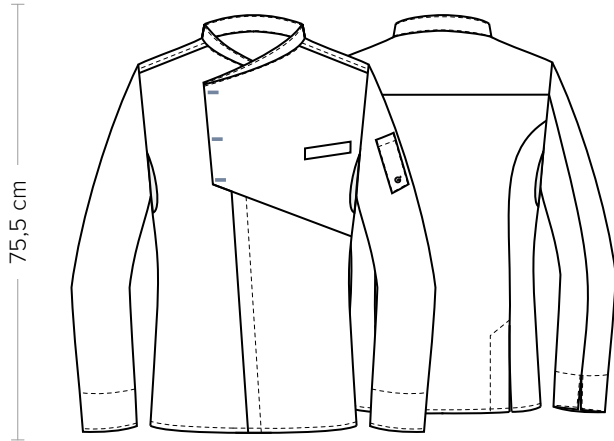
**SIZE GUIDE 1)** Take the anatomical measurements (body with underwear) without tightening, keeping the measuring tape taut. **Note:** in case you want to wear of the gowns already with the clothing underneath take the measurements already dressed. **2)** If there is a measure between 2 sizes between the measurements taken, we advise you to take the bigger one. **3)** The measurements in the table are expressed in centimeters.

**GIBLORS.COM**

# EMANUEL

ITEM CODE  
K8G00731

**Giblor's**  
italian work/life specialist



## DETAILS

- Concealed buttoning with press studs
- 3 visible press studs
- Breast pocket
- Pen pocket on sleeve
- Mesh fabric panels
- 2 rear vents

## SIZES

S ÷ 4XL

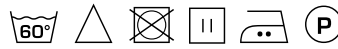
**SLIM FIT**

## COLOURS

U32 Black

## FABRIC

50% lyocell  
50% polyester  
180 g / m<sup>2</sup>



The measures indicated refer to sizes **S** for women, **L** for men. For one-size-fits-all garments, the measurements indicated are effective.

One of **Giblor's Best Sellers**: loved by any kind of chef, it becomes irreplaceable once tried. Its timeless style and contemporary details have the approval of a big number of professionals.

## AVAILABLE COLOURS



U32 Black

SIZE TABLES  
AND CORRESPONDENCES

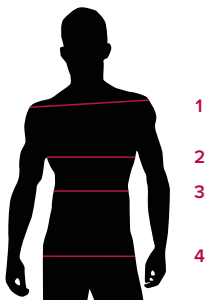


TABLE ST-G1 SLIM FIT

SIZE	XS	S	M	L	XL	XXL	3XL	4XL	5XL
<b>1 - SHOULDERS</b>	44	45	46	47	49	51	53	55	57
<b>2 - CHEST</b> circumference	92-96	96-100	100-104	104-111	111-116	116-124	124-132	132-142	142-152
<b>3 - WAIST</b> circumference	80-84	84-88	88-92	92-99	99-106	106-116	116-126	126-138	138-148
<b>4 - HIPS</b> circumference	92-96	97-101	101-105	105-111	111-117	117-125	125-133	133-143	143-153

**SIZE GUIDE 1)** Take the anatomical measurements (body with underwear) without tightening, keeping the measuring tape taut. **Note:** in case you want to wear of the gowns already with the clothing underneath take the measurements already dressed. **2)** If there is a measure between 2 sizes between the measurements taken, we advise you to take the bigger one. **3)** The measurements in the table are expressed in centimeters.

**GIBLORS.COM**